

## Information about the School

### Mission Statement

The Ladder School will be a safe, well ordered and caring environment for learning. It will deliver high quality education to all its students and will support them to develop their individual potential for growth, self-worth and self-control.

### Values

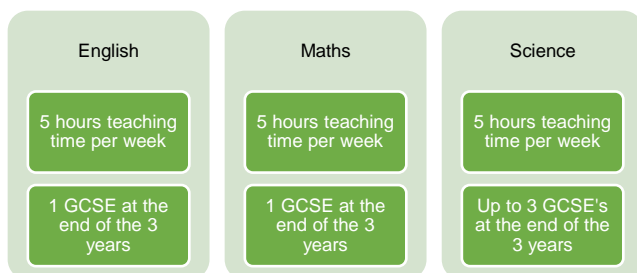
1. Alternative Provision doesn't mean a dumping ground...it's mainstream with the reasonable adjustments to succeed
2. High standards and high expectations are incredibly important and are the corner stones to a successful school
3. The Ladder School, should become the go-to place for educators from across the country to see best practice
4. Good simply isn't good enough
5. Learning is about a journey and there is more than one way to get to the destination
6. Qualifications, manners, respect and opportunity should be the foundations for students that need a second chance.

### Curriculum Model

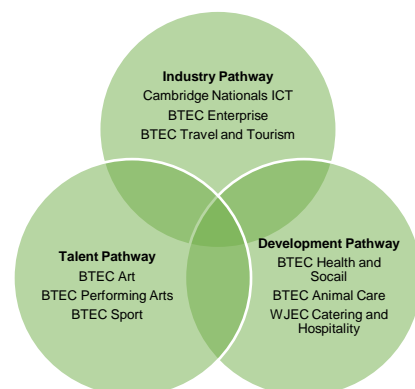
All students will study a combination of academic and vocational pathways. The curriculum has been designed to teach all of the academic course in the morning and all of the vocational options courses in the afternoon.

All lessons offer a high teacher/student ratio. Academic lessons are taught horizontally, however vocational lessons are taught vertically in a unit based format.

#### Academic Study

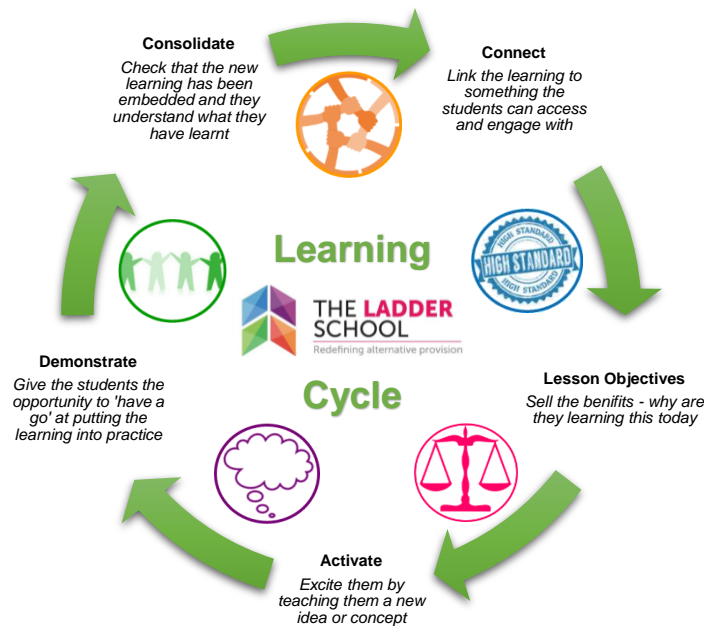


#### Vocational Study



## Teaching and Learning

We use a simple Learning Cycle to understand and ensure there is methodology to our format of Learning and Teaching. Other than our structure, we allow staff to decide how best to teach the students in front of them. As long as students are making progress and staff are ensuring that learning is engaging, there is no set what to how staff teach.



## School Day

We ask that all staff are on site no later than 8.20am in the morning, where there will be a team briefing ready for the day ahead. Students are asked to be onsite at 8.35am where they have the opportunity to get prepared for the day. Lessons start promptly at 8.45pm.

Time	Session
8.45am – 9.45am	Lesson 1
9.45am – 10.45am	Lesson 2
10.45am – 11.00am	Supervised Break
11.00am – 12.00pm	Lesson 3
12.00pm – 12.30pm	Personal Development
12.30pm - 1.00pm	Supervised Lunch
1.00pm – 2.00pm	Lesson 4
2.00pm – 3.00pm	Lesson 5

## Safeguarding

The Designated Safeguarding Lead (DSL) is **Mr C Bury (Principal)**. He can be contacted by the school office. The member of staff on duty will be displayed in reception daily. **Mrs P Bennett (Head of Personalised Support)** is the deputy DSL.

